

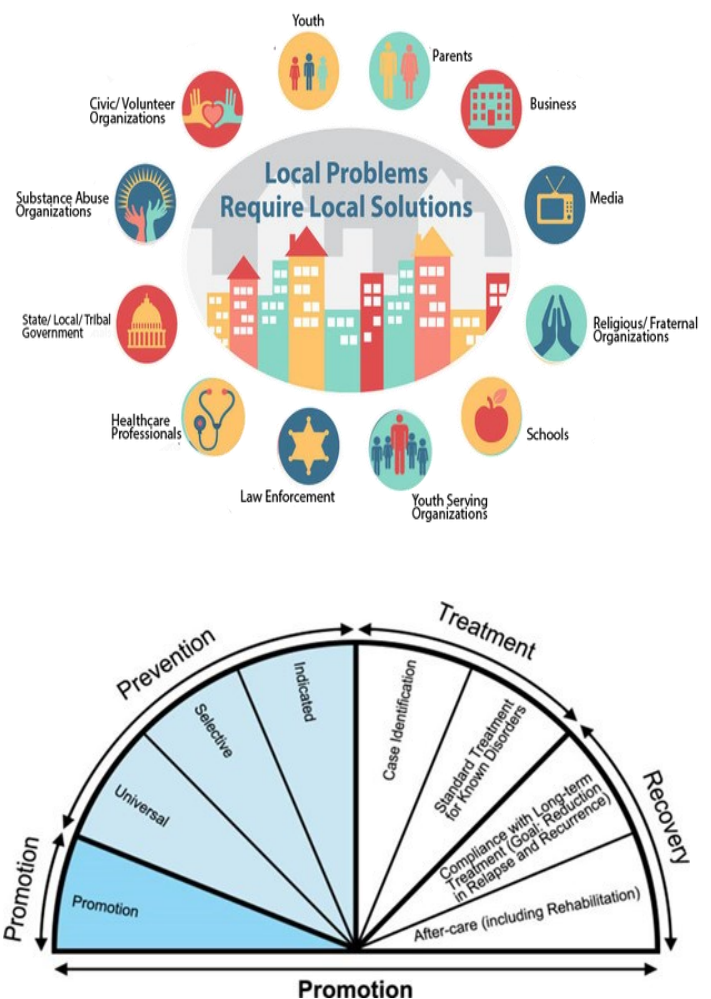


What is Missoula SUD Connect (SUDC)?

SUDC is a community-wide approach to addressing Substance Use Disorder through prevention, treatment and recovery in collaboration with enforcement. Our focus is on identifying needs and gaps and creating measurable, feasible action plans to fill those gaps and implement systems-level changes.

To achieve this, SUDC will start by developing a plan to:

- ◆ Improve agency coordination and collaboration through the development of shared goals on the part of healthcare providers, social services, the justice system, and corrections department.
- ◆ Increase effective integration of evidence-based substance use prevention and public health strategies that reduce new cases of Substance Use Disorder.
- ◆ Increase access to timely Substance Use Disorder treatment and care.
- ◆ Strengthen the continuum of care (prevention, treatment, recovery) to effectively manage Substance Use Disorder in Missoula County.
- ◆ Identify existing, and potential, funding and resources that are designated to achieve the goals of reducing drug-related crime and addiction in Missoula County.



Phase 1 Leadership Roundtable

System Leadership

The Leadership Roundtable will be composed of community leaders whose organizations “own” key parts of the crisis continuum in Missoula County. These leaders have decision-making authority over their organization’s strategy, budget, personnel and programs.



During Phase 1, the Leadership Roundtable will:

- ♦ Participate in a Stakeholder Retreat; meet monthly as SUDC is developed, and no less than quarterly as we move forward;
- ♦ Engage others from a circle of influence;
- ♦ Work toward formulating the SUDC’s coalition plan, based on input from the Working Group and Core Team;
- ♦ Potentially appoint agency/program staff to be involved in planning work;
- ♦ Ensure that the Working Group has the resources and expertise it needs.

Leadership Roundtable members are encouraged and expected to share information about SUDC with their own organization, and in turn authorize the sharing of appropriate data for tracking.



MSC Project Director/Core Team Member:
Shannan Sproull

Shannan Sproull is an authority on substance abuse prevention, with decades of experience in the public and private sectors. Shannan@MissoulaUnitedWay.org



MSC Leadership Roundtable Chair/Core Team Member:
Janna Lundquist

Janna is an organizational consultant and former United Way board president with an extensive background in business and nonprofit leadership. Janna@JannaLundquist.com